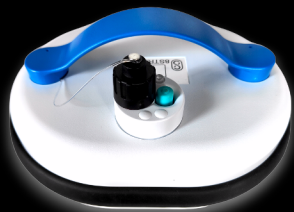


# 7311



ENGLISH

ver 24-01

Congratulations on the purchase of your new 7311 pool cleaner. It is a powerful autonomous robot delivered ready to use. Ideal for pools of all sizes and in all forms. This robot comes with an easy accessible debris basket along with floating battery pack for ease of use and cleaning range.

Please check the package to make sure that all parts are ready to be installed.  
If any parts are missing or damaged, please contact your supplier.

We recommend that you check the connections of the cables from the cleaner to the floating battery pack (chapter 4).

*Table of contents*

01 Product features	.....	p03.
02 Warnings and Safety Instructions	.....	p03.
03 Package contents	.....	p05.
04 Start-up	.....	p06.
05 Climbing walls	.....	p08.
06 Cleaning the filter basket	.....	p09.
07 Cleaning the impeller	.....	p10.
08 Troubleshooting	.....	p11.
09 Spare parts list	.....	p14.
10 Warranty Conditions	.....	p17.

## 01 Product features

Maximum Depth: 2,5m

Maximum size of the pool: 10m x 5m

Input: 100-240 VAC, max 1,5 A

Output: 34 VDC,

Input power: 100 W

Battery: Li-Ion, 28,8 V DC, 3200 mAh

### Operating Conditions

The cleaner is designed to be used in pools for private use under the following conditions:

- for use in water with a temperature between 5-36°C, recommended optimal temperature between 13-35°C

- water pH 7.0-7.6

- maximum chlorine content 4 ppm, maximum water salinity 4000 ppm

Caution: Remove the cleaner from the pool if applying chemical shock treatments.

## 02 Warnings and Safety Instructions

- 2.1 Please abide by your country's pool safety regulations.
- 2.2 Position the power supply at least 3.5 m from the edge of the pool.
- 2.3 Please make sure that the electrical outlet for the cleaner's power supply conforms to the applicable electrical installation regulations and is protected by a residual current circuit breaker with 30 mA.
- 2.4 Keep the power supply protected from rain, water, and moisture; charger and battery protect from temperatures above 40°C. Do not expose them to direct sunlight.
- 2.5 Do not switch the cleaner to "ON" if it is out of water. You may risk damaging it and voiding the warranty.
- 2.6 Before performing any maintenance on the cleaner, make sure that the charger is unplugged from the mains and the battery disconnected from the cleaner.
- 2.7 Do not use with a damaged power supply or floating cable. If a damaged cable is found, have a qualified professional replace it to avoid any risk of injury.
- 2.8 This cleaner may only be used with the supplied charger. Always use original replacement parts.
- 2.9 Do not use the cleaner when people are swimming in the pool.
- 2.10 If the cleaner is being used in the pool, do not swim in it. First, remove the cleaner from the pool.
- 2.11 If you are not using the cleaner, remove it from the pool.
- 2.12 Do not use the cleaner if the pool's counter current system is on.
- 2.13 This device is not intended for persons, including children, with reduced physical, sensory or mental abilities or who lack experience and knowledge, unless they are under direct supervision or have been instructed to use the device in a safe manner and understand its potential hazards. Children are not allowed to play with the device. Cleaning and maintenance performed by the user must not be carried out by children unattended.
- 2.14 The installed battery is rechargeable Li-ion battery. Never attempt to replace the battery yourself.
- 2.15 Leave the charger unplugged when not in use.

## *Safety Instructions for the rechargeable batteries*

- Disconnect the battery from the charger immediately after charging is completed.
- Never try to charge a damaged rechargeable battery.
- Non-rechargeable batteries must not be recharged. Do not use batteries other than those specified by the manufacturer.
- Incorrect use of the battery may lead to overheating, explosion or spontaneous combustion and may cause serious injury.
- Do not short-circuit the positive and negative contacts (e.g. with a wire).
- During transportation or storage, the battery must be appropriately packaged and protected against short-circuit between the contacts.
- Do not pierce or break the battery and protect it against other mechanical damage.
- Do not disassemble batteries and do not modify them. Rechargeable batteries are equipped with various safety systems. If one of these systems is damaged, this may cause overheating, explosion, or spontaneous combustion of the battery.
- Do not leave the battery near a naked flame, stove or other sources of heat. Protect the battery against direct sunlight and do not leave or use in a car in nice weather.
- If the battery is not being used, it should be charged to about 40 - 60% and stored at room temperature. During extended storage, the battery must be recharged once a year to prevent being fully discharged.
- Charge the battery at room temperature. Otherwise, the battery can be seriously damaged or its service life reduced. Do not recharge batteries near acids or easily ignited materials.
- The battery and charge heat up during the charging process. This is normal and not considered a defect.
- If the battery is not recharged within the specified period, you must not continue the charging process. Otherwise, the battery may heat up, explode, or spontaneously combust.
- If an unusual odor, overheating, changes to color or shape or other abnormal phenomena appear during charging/discharging, immediately cease using the battery.
- If battery fluid gets into your eye due to leakage, do not rub it, but flush it with a large volume of water and immediately seek medical aid. If you do not seek treatment, the battery fluid can damage your eye.
- The battery must be charged before it is first used. The battery will only achieve its full capacity after several charging cycles.
- Only charge batteries using charger specified for this purpose by the manufacturer. Malfunctions or fire may occur if you use a different charger.
- Vapor may escape if the battery is used incorrectly or is damaged. Ensure you get enough fresh air and seek medical aid in the case of difficulties. The vapors may irritate the airways.
- You should insulate the contacts on worn-out batteries, e.g., by using sticky tape, and hand them into the local recycling center or battery recycling facility. Never burn rechargeable batteries or throw them into the normal waste bin.



## 03 Package contents

1. 7311 Robotic pool cleaner
2. Battery Pack Charging Transformer
3. Floating Battery Pack
4. Sample of fine filter
5. Retrieval hook
6. Instructions



Floating battery pack is inside the debris basket



## QUICK FACTS

- Our cleaners are designed to facilitate pool maintenance. However, they are not designed to clean pools full of algae and leaves (e.g., end of the winter season). In such a case, a mechanical hand net should be used. Before using the cleaner, clean the filter and impeller.
- Brushes and belts wear out faster if the pool is lined with tiles. Therefore, check them regularly.
- Use in vinyl pools: Certain vinyl liner patterns are particularly susceptible to surface wear caused by objects coming into contact with the vinyl surface. These objects may also include brushes of pool vacuum cleaners. The cleaner's manufacturer is not responsible for any damage to vinyl liners.



- To remove the cleaner from your pool, attach the supplied retrieval hook to standard cleaning pole (cleaning pole not included), hook onto the handle of the floating battery pack, pull the battery pack to you until you can grasp the cable, lift the cable slowly and gently until you can grab the robot by the handle. Use the handle to fully pull out the cleaner.
- In order to access the filter basket, place hands as shown in picture. Push with thumbs to unlock lid.

**Important:** Do not start the robotic cleaner unless it is immersed in the water!

## 04 Start-up



4.1 Take the power cord from the robot to connect to the battery pack.



4.2 Insert the blue plug into battery pack as far in as you can.



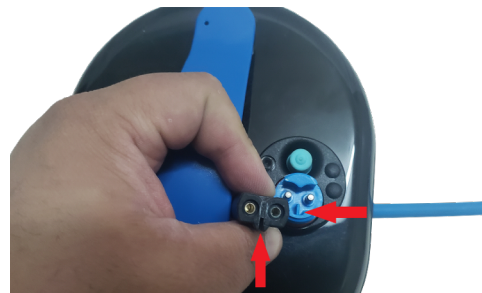
4.3 Take the black cap of the power cord and screw onto the battery pack.



4.4 Hand tighten the cap. Do not use tools to over-tighten the cap.



4.5 Unscrew the charging plug cap on the top of the battery pack.



4.6 Before inserting the charging cord into the battery pack, take note of the notch on the battery pack that corresponds with the slot on the charging cord. The plus is NOT designed to be inserted at an angle.

## 04 Start-up



4.7 Insert the charging cord into the battery pack. If the cord is not inserted in the correct orientation as indicated with the notch and slot, you can cause damage to the cleaner, battery pack or charger.



4.8 When charging the battery pack, a LED light on the charger will turn on. A red light will indicate that the battery is charging. A green light will indicate a fully charged battery.



4.9 After fully charging the battery pack, unplug the charging cord and screw back on the cap to the plug on the battery pack. Hand tighten until secured.



4.10 Make sure that the operating conditions are met (see Product specifications). Place the robot in your pool and wait until it is completely submerged. If necessary, help it to sink manually.



4.11 To activate your cleaner, press button at the top of the battery pack. A LED light next to the button will turn on. The robotic cleaner will now run its 2 hours cleaning cycle and then automatically turn off. If you want to turn the cleaner off early, press and hold the button.



4.12 At the end of the cleaning cycle the robot will move to an edge of your pool. Use the retrieval hook supplied with your cleaner to remove the cleaner out of the pool. The tool is designed to hook onto the handle of the cleaner. When the cleaner is close to the surface of the water, use your hand to grasp the handle of the cleaner. Slowly lift the cleaner out of the pool and let the water drain out of the cleaner.

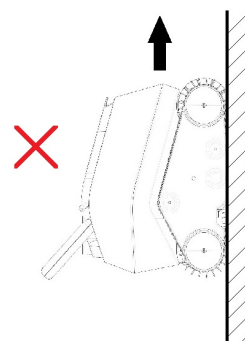
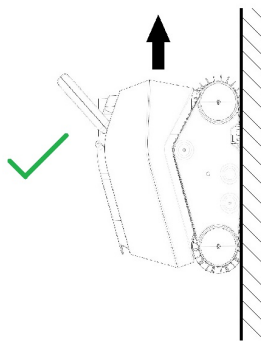
4.13 Do not remove your robot out of water immediately after the end of its cleaning cycle so as not to cause a temperature shock.

4.14 When the cleaner is no longer used for an extended period, screw on the protective caps and store your robot and battery pack indoors. Charge the battery before storing. Recharge the battery every three months.

## 05 Climbing Walls

*In order to be efficient while cleaning the waterline, the robot is designed to climb up the waterline with the orientation that offers the most effective brushing.*

*It is therefore normal to see it climb to the waterline only by the side with the handle.*



## 06 Cleaning the filter basket



6.1 In order to access the filter basket, place hands as shown in picture. Push upward 5 cm with thumbs to unlock cover.



6.2 Use both hands to lift the basket with the handles on the sides of the basket



6.3 Open the lid of the basket by pulling the tab on the front of the basket and empty content.

6.4 Empty the debris inside the basket. Use a jet of water to rinse the faces inside and outside the basket filter panels. Also inspect and clean the inside and outside of the robot.



6.5 Once cleaned, replace the basket in the robot. If the basket is not properly aligned, it is not possible to close the cover of the cleaner.

6.6 Press down the handles to lock your basket



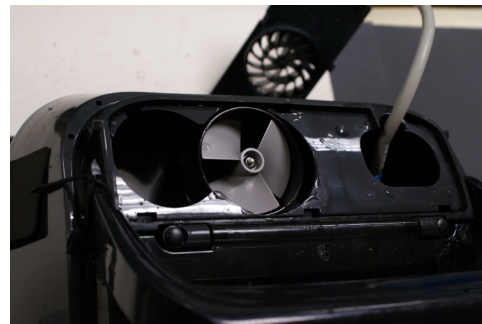
## 07 Cleaning the impeller

*Some debris can clog or be wrapped around the impeller of the pump. By force, these debris can hinder the proper functioning of the robot or even damage the engine.*

*Regular visual inspection is part of the normal maintenance of the robot.*



7.1. Use a flat screwdriver to remove the protective grille.



7.2 Clean the impeller.

7.3 Replace the grill guard.

## 08 Troubleshooting

PROBLEM	CAUSE(S)	SOLUTION(S)
The robot floats on the surface.	<ul style="list-style-type: none"> <li>- Immersion of the robot in the pool.</li> <li>- Basket clogged/full</li> <li>- An object is stuck in the turbine or the grid located above the turbine.</li> <li>- Use of the fine filter.</li> <li>- Water level in the pool.</li> </ul>	<ul style="list-style-type: none"> <li>- When you put the robot in the pool, let it sink and reach the floor before you turn it on.</li> <li>- Check that the impurity collection basket is not full.</li> <li>- Check that there are no foreign objects in the turbine or blocked in the grille above the turbine.</li> <li>- If you use an optional fine filter, remove the filter from its plastic wrap, immerse the filter in the water so that it is already wet before you put it in the robot and let the robot settle on the floor before you turn it on.</li> <li>- If your pool water level is too high, the robot might turn around and take in the air if it touches the top seats, in this case to adjust the level of the pool.</li> </ul>
The robot does not clean all areas of the pool.	<ul style="list-style-type: none"> <li>- Pool size may be larger than maximum pool size listed on Product Features</li> <li>- An object blocks the rollers, the wheels of the robot or hinders the movement of the robot.</li> </ul>	<ul style="list-style-type: none"> <li>- Fully charge your battery pack and run another cleaning cycle.</li> <li>- Our robots are designed to facilitate the maintenance of your pool/ However, they are not intended to be the sole tool used to clean a pool fully of algae and leaves (ex: end of winter period). Additional tools and cleaning cycles will be needed.</li> <li>- Insert the robot at the center point of the pool. If your pool is oval or rectangular, this point is the middle of the length.</li> <li>- Check that there is no foreign object blocking the hydraulic circuit or the brushes and belts under the robot and on the sides.</li> </ul>
The robot does not recover debris during operation. Fine particles (dust or dirt, pollen ...) are ejected by the impeller.	<ul style="list-style-type: none"> <li>- The robot does not receive enough power.</li> <li>- Basket clogged / full.</li> <li>- An object is stuck in the impeller or the grid located above the impeller.</li> <li>- Debris are too fine, the robot is made to pick up the particles more than 50 microns (with the fine filter inside the basket).</li> </ul>	<ul style="list-style-type: none"> <li>- Check the connection of the cables.</li> <li>- Clean the basket and filter panels. Clean the fine filter if you use this accessory.</li> <li>- Check if the basket is properly inserted. (See chapter Cleaning of the filter basket).</li> <li>- Check that there are no foreign objects in the impeller or blocked in the grid above the impeller</li> <li>- Check the attachment of the basket, press it if necessary to lock it.</li> <li>- Use a fine filter (check item number on the parts drawing 20, sku 71170) on the other hand do not forget that it is the filtration of your swimming pool which ensures the cleaning of the particles of less than 50 microns.</li> </ul>

PROBLEM	CAUSE(S)	SOLUTION(S)
The robot moves in one direction.	<ul style="list-style-type: none"> <li>- An object blocks the rollers, the wheels of the robot or interfering with the movement of the robot.</li> </ul>	<ul style="list-style-type: none"> <li>- Check that there are no foreign objects in the impeller located above the motor.</li> <li>- Check that there are no foreign object blocking the hydraulic circuit or the brushes and belts under the robot and sides.</li> </ul>
The robot does not move and the filtration pump does not work either. The robot doesn't work any longer.	<ul style="list-style-type: none"> <li>- The robot is not connected to a battery pack.</li> <li>- Power off.</li> </ul>	<ul style="list-style-type: none"> <li>- Check that the battery pack is turned on and that the LED light is turned on.</li> <li>- Check that the LED light stays on during cleaning cycle.</li> <li>- Check all connections of the robot to the battery pack</li> </ul>
The pump runs but the robot does not move. The robot turns on but stays on the spot.	<ul style="list-style-type: none"> <li>- No / not enough power is transmitted to the robot .</li> <li>- An object blocks the rollers, the belts, the wheels of the robot or the path.</li> <li>- Possibility of motor problem.</li> </ul>	<ul style="list-style-type: none"> <li>- Take out the robot in the water and unplug from the battery pack. Open the cover of the robot and remove the basket.</li> <li>- Check that there are no foreign objects in the impeller located above the motor.</li> <li>- Check that there are no foreign object blocking the hydraulic circuit or the brushes and belts under the robot and sides.</li> <li>- Contact the After-sales Service</li> </ul>
Robot does not climb walls.	<ul style="list-style-type: none"> <li>- The robot is too heavy.</li> <li>- The flow is not enough.</li> <li>- The walls are too slippery .</li> <li>- The handle of the robot is poorly directed.</li> <li>- pH level is too high. Keep the pH level close to 7.2 to avoid slippery walls</li> </ul>	<ul style="list-style-type: none"> <li>- Check that the collection of debris basket isn't full</li> <li>- Check and clean if need the impeller of the pump or the grid at the top of the impeller (propeller on top of the robot toward the handle)</li> <li>- Presence of algae on the walls or fatty deposits. Remove algae using the chemical treatment of water and manual brush to remove these fatty deposits.</li> <li>- Check that the handle of the robot is directed to the rear. The cable should be above the handle.</li> <li>- Check that the drain valve is not broken.</li> </ul>
The robot goes round in circles.	<ul style="list-style-type: none"> <li>- A belt is damaged.</li> <li>- One of the 4 side wheels is damaged or unscrewed.</li> </ul>	<ul style="list-style-type: none"> <li>- Check the condition of the drive belts. If necessary, replace the faulty belt.</li> <li>- Check the wheels bolted to the ends of the rollers. These wheels fit on the roll and then screw.</li> </ul>



PROBLEM	CAUSE(S)	SOLUTION(S)
The robot stops after a few minutes.	<ul style="list-style-type: none"> <li>- Connection of the floating cable.</li> <li>- Possibility of fault of the floating cable.</li> <li>- Possibility of motor leakage.</li> </ul>	<ul style="list-style-type: none"> <li>- Check the connection of the floating cable. Disconnect and reconnect as needed.</li> <li>- Check the status of the connectors at the ends of your cables (damaged, rusted, etc.)</li> </ul>
The robot moves slower than before.	<ul style="list-style-type: none"> <li>- The robot is too heavy.</li> <li>- The flow is not sufficient.</li> <li>- Battery pack is near end of life</li> </ul>	<ul style="list-style-type: none"> <li>- Check that the dirt collecting basket is not full.</li> <li>- Check and clean if necessary the pump impeller or the grid above the impeller (propeller at the top of the robot towards the handle).</li> <li>- Check if LED light stays on during cleaning cycle or that the robot lasts the full cleaning cycle. Contact after sales service if it does not.</li> </ul>
No LED lit on the battery pack	<ul style="list-style-type: none"> <li>- The power is not reaching the cleaner</li> <li>- Battery pack is near end of life cycle</li> </ul>	<ul style="list-style-type: none"> <li>- Check that the robot lasts the full cleaning cycle after fully charging the battery pack.</li> <li>- Check the cable connections.</li> <li>- Contact our Customer Service.</li> </ul>
No LED lit on charger	<ul style="list-style-type: none"> <li>- Bad connection between the outlet and charger.</li> <li>- Bad connection between the charging cord and battery pack</li> <li>- Your electrical outlet is not working</li> </ul>	<ul style="list-style-type: none"> <li>- Check the status of the GFCI on your outlet.</li> <li>- Plug in another appliance to see if electricity is flowing to the outlet</li> <li>- Check the connections charging cord to the battery pack.</li> <li>- Check if charger is connected to the outlet.</li> </ul>
LED light does not change color on charger	<ul style="list-style-type: none"> <li>- The charging controls may not be functioning</li> </ul>	<ul style="list-style-type: none"> <li>- Check that the battery pack is properly plugged into the battery pack.</li> <li>- Check the metal connectors in charging cord and on battery pack for signs of damage. (Rust, corrosion, etc)</li> <li>- Contact our Customer Service.</li> </ul>
No LED lit on the battery pack	<ul style="list-style-type: none"> <li>- Battery pack may not actually be fully charged.</li> <li>- Possibility of motor problem.</li> <li>- Battery pack is near end of life cycle.</li> </ul>	<ul style="list-style-type: none"> <li>- Check if the battery pack is charging abnormally quickly.</li> <li>- Wait until the charger has a green LED light before using the robot.</li> <li>- Check and clean if necessary the pump impeller or the grid above the impeller (propeller at the top of the robot towards the handle).</li> <li>- Please contact your dealer or our after-sales service at <a href="mailto:service@8stre.me">service@8stre.me</a></li> </ul>
The robot leaves traces on the floor or on the walls	<ul style="list-style-type: none"> <li>- State of the brushes and/or transmission belts</li> </ul>	<ul style="list-style-type: none"> <li>- These brushes and belts are wear-and-tear parts. Please check them and change them if necessary</li> </ul>

Please contact your supplier if you have any other questions.

09 Spare parts list

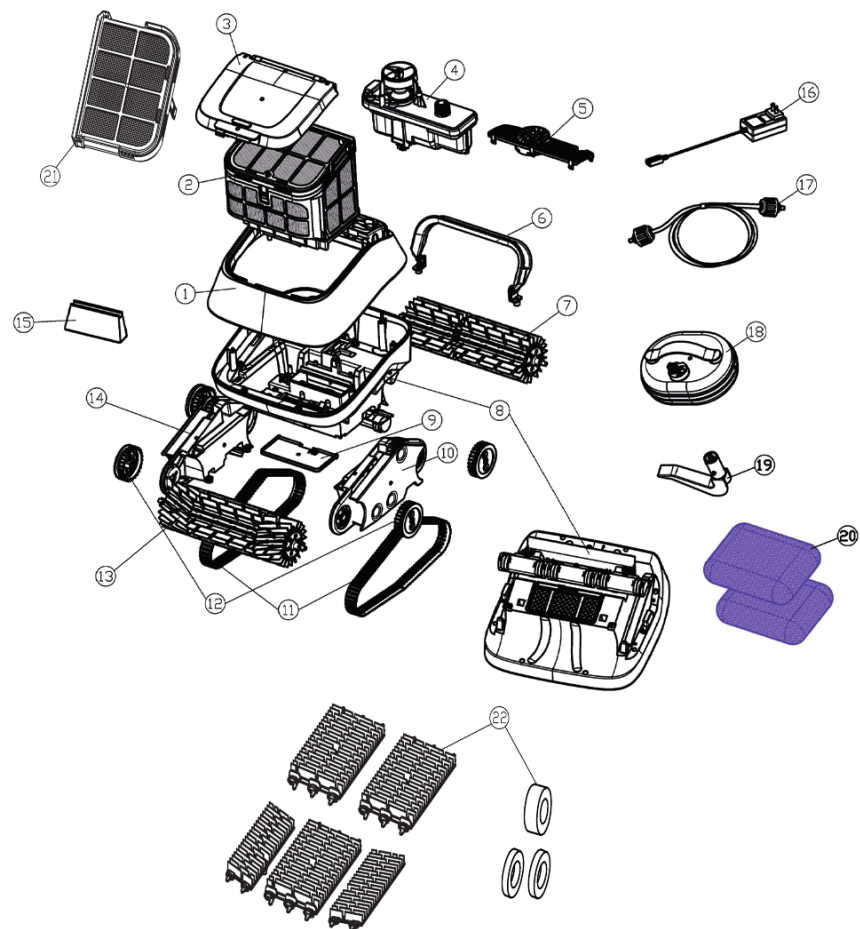
DRAWING : ITEM NUMBER	SKU	PART DESCRIPTION
1	71000	Top Shell. Dark grey
2	71010	Debris basket (parts 15, and 22 included)
3	71020	Top lid. smoke
4	71052	Pump motor block
5	71070	Pump cover lid. Black
6	71220	Handle
7	71090	Geared roller tube assembly. Black
8	71100	Bottom chassis. Dark grey
9	71110	Fast drain Flap. Dark grey
10	71120	Left Side Support. Black
11	71130	Drive belts. Black - 2 pieces
12	71140	Geared wheel. Grey - 4 pieces
13	71150	Front roller tube
14	71160	Right Side Support. Black

---

## 09 Spare parts list

DRAWING : ITEM NUMBER	SKU	PART DESCRIPTION
15	71012	Non return inlet
16	36132	Charger
17	64151	Floating Cord 3m
18	30591	Floating Power Pack
19	64110	Retrieval Hook
20	71170	Fine Filter pad
21	71011	Top filter screen
22	72210	High traction brushes

## 10 Spare parts list



## 10 Warranty Conditions

The manufacturer provides a two-year liability period (warranty) for defects caused by defects in materials or manufacturing, if used in accordance with the recommended intended purpose and instructions in the user's guide. This robotic pool cleaner is designed for use in private swimming pools; use for commercial purposes is not allowed.

Service and replacement parts are provided by your dealer. The warranty period begins from the date stated on the invoice issued by the seller to the end customer during the product purchase. This date may not be the product delivery date to the end customer. Customers are required to furnish this document when making claim under this warranty. The warranty period shall be extended by the time for which the product was under warranty repair.

Warranty disclaimer:

- Defects caused by defective household wiring, accidents, overload, misuse, insufficient maintenance, unauthorised interference or alteration, fire, flooding, frost or natural disasters. Damage or degradation of the pool surface or its lining.
- Defects or damage caused by improper power supply usage.
- Common wear and tear of the product or its components, such as filters, cylinders, wheels, belts, brushes, etc., caused by ordinary use.

Liability disclaimer: This limited warranty represents the complete warranty. No other warranties apply to this product; they are not explicitly stated, or implied. This limited warranty gives the product owner certain legal rights that may vary by country. Under no circumstances may the manufacturer or the seller be liable for consequential, special or incidental damages of any kind, including injury to persons, property damage, or damage and loss of the product itself. Neither the manufacturer nor the seller is responsible for any additional expenses that may arise during the installation or maintenance of the product. The seller may apply charges for shipping, parts or labour, unless a warranty defect is acknowledged.

Some countries do not allow the exclusion or limitation of incidental or consequential damages or warranties. The above limitations may apply to you.



### Product Disposal

Do not dispose of the electrical device together with normal household waste! In accordance with European Directive 2012/19/EU, worn out electric tools must be collected separately and returned for ecological recycling. For more information on disposal of your device, please contact your local authorities.

