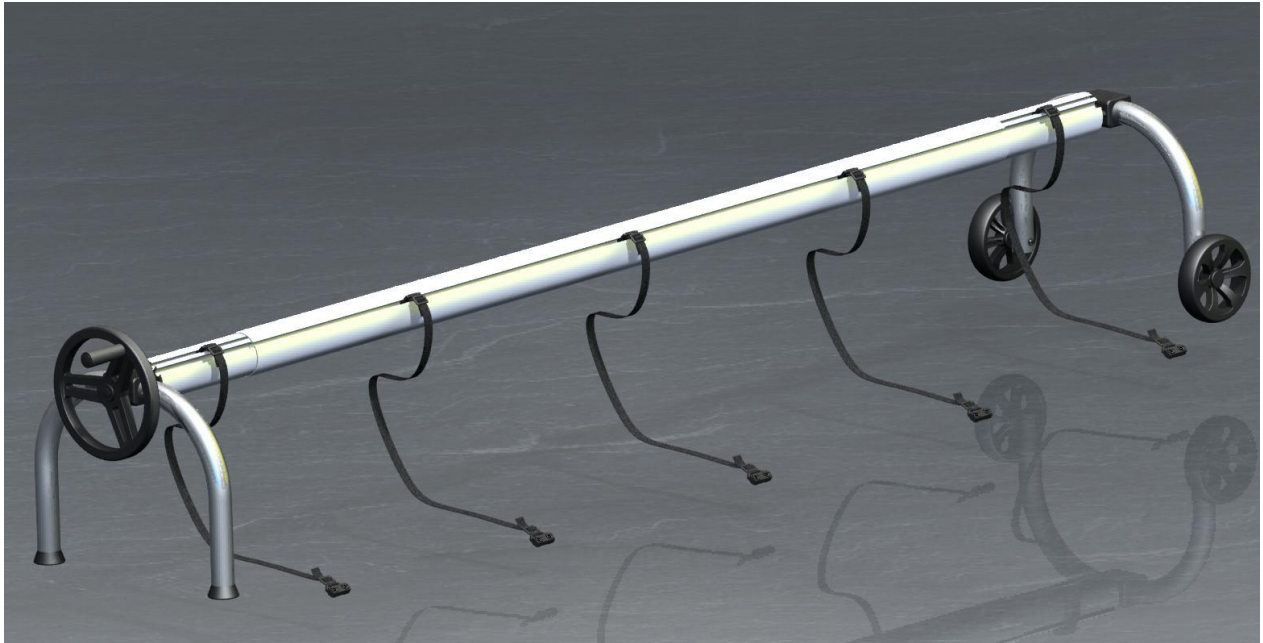


Manual Reeling System

Support Stands - Instructions for Use



Variants:

Stacionary stand

Mobile stand

Movable stand

List of all parts of the reeling system

Quantity and type of parts may differ with the type of the manual reeling system, see the table.

	Stacionary stand		Mobile stand		Movable stand	
	Pos. no.	Quantity	Pos. no.	Quantity	Pos. no.	Quantity
FIXED STAND	<u>1</u>	2				
MOBILE STAND			<u>1</u>	1		
PORTABLE STAND			<u>2</u>	1	<u>2</u>	2
CASTOR WHEEL			<u>3</u>	2		
BEARING HOUSING	<u>4</u>	4	<u>4</u>	4	<u>4</u>	4
BUSHING	<u>5</u>	2	<u>5</u>	2	<u>5</u>	2
FOOT			<u>6</u>	2	<u>6</u>	4
SLIDE BEARING			<u>7</u>	4		
CONTROL WHEEL	<u>8</u>	1	<u>8</u>	1	<u>8</u>	1
LONG PIN	<u>9</u>	1	<u>9</u>	1	<u>9</u>	1
SHORT PIN	<u>10</u>	1	<u>10</u>	1	<u>10</u>	1
HANDLE	<u>11</u>	1	<u>11</u>	1	<u>11</u>	1
DRUM HUB	<u>12</u>	2	<u>12</u>	2	<u>12</u>	2
SCREW M8x90	<u>13</u>	1	<u>13</u>	1	<u>13</u>	1
SCREW M8x120	<u>14</u>	1	<u>14</u>	1	<u>14</u>	1
SCREW M8x60	<u>15</u>	4	<u>15</u>	4	<u>15</u>	4
SCREW M8x70	<u>16</u>	1	<u>16</u>	3	<u>16</u>	1
BOX NUT M8	<u>17</u>	4	<u>17</u>	4	<u>17</u>	4
SELF-LOCKING NUT M8	<u>18</u>	4	<u>18</u>	6	<u>18</u>	4
WASHER M8 – ø27	<u>19</u>	2	<u>19</u>	2	<u>19</u>	2
WASHER M8 – ø16	<u>20</u>	13	<u>20</u>	9	<u>20</u>	5
PIN CAP ø20	<u>21</u>	2	<u>21</u>	2	<u>21</u>	2
HANDLE CAP ø23	<u>22</u>	1	<u>22</u>	1	<u>22</u>	1
STAND CAP ø42	<u>23</u>	2	<u>23</u>	2		
CASTOR WHEEL CAP ø32			<u>24</u>	2		
ANCHORING SCREW 8	<u>25</u>	8				
ANCHORING SCREW HEX CAP	<u>26</u>	8				
ANCHORING DOWEL PLUG 12	<u>27</u>	8				

Stand assembly

Manual reeling system support stands are delivered completely assembled, see the pictures below. They are assembled and adjusted to ensure an optimum operation. Connect the telescopic rod according to the telescopic rod user manual. In case of a fixed stand, perform the anchorage to the base using the supplied dowel plugs, screws, washers and caps, see the “Fixed stand expanded view”. Drill the holes through the pre-bored holes in the stand, see Pos. 1.

STACIONARY STAND



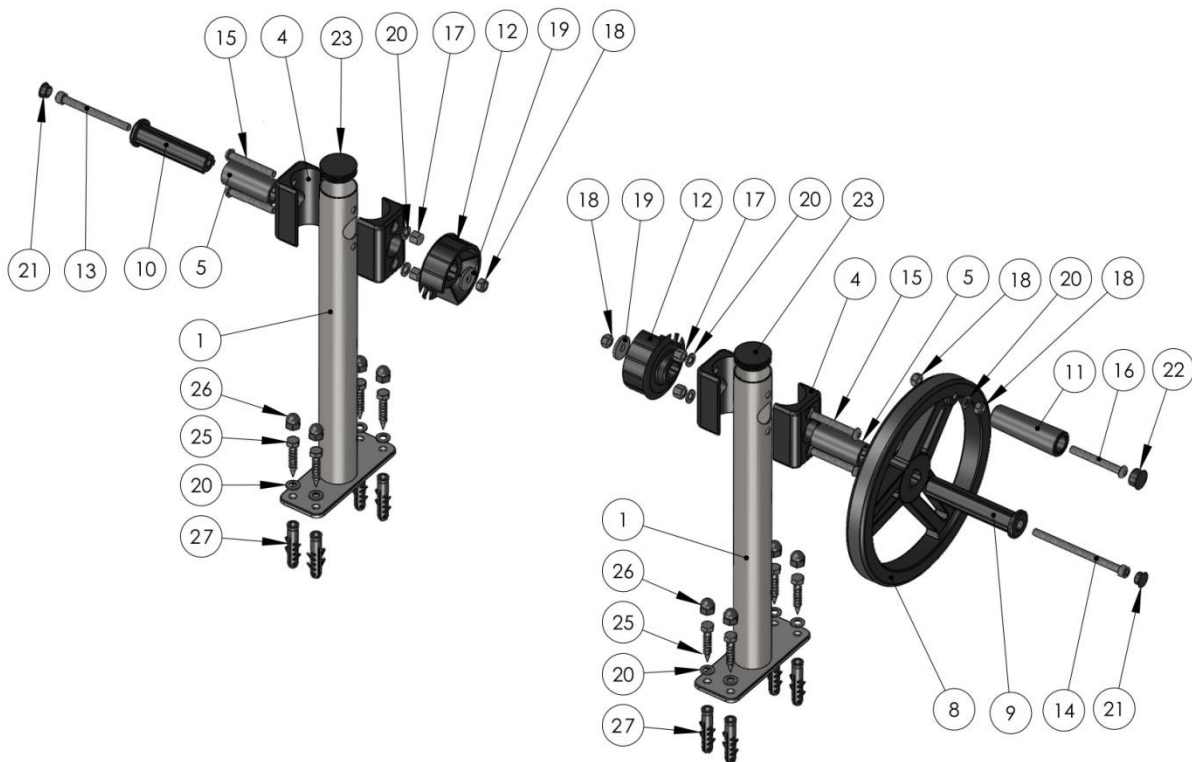
MOBILE STAND



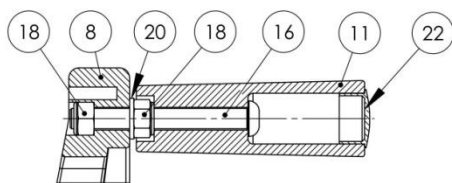
MOVABLE STAND



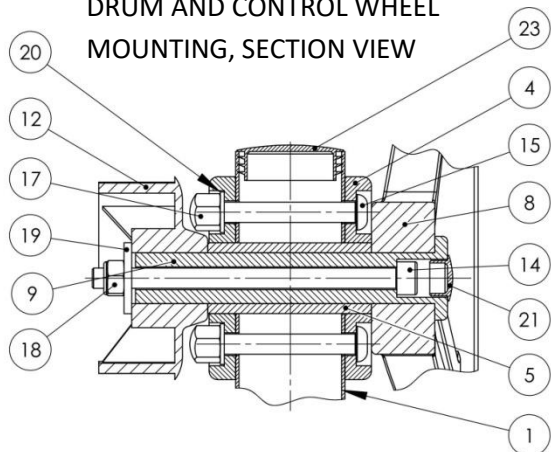
STACIONARY STAND expanded view



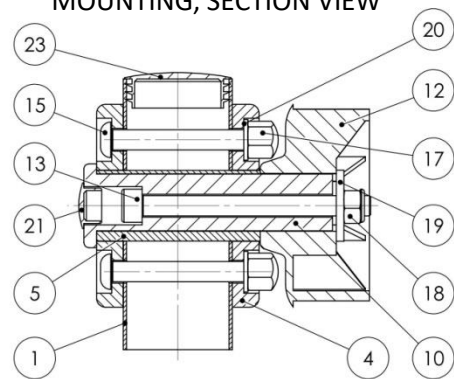
HANDLE MOUNTING, SECTION VIEW



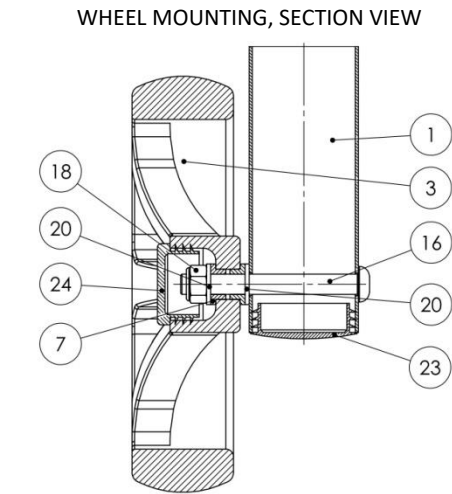
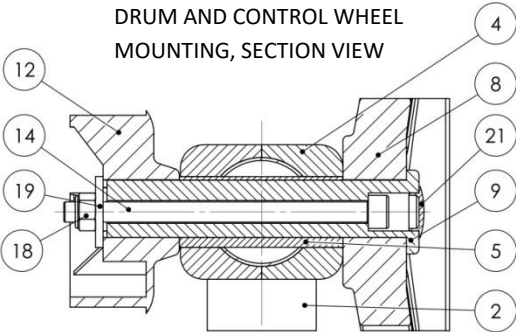
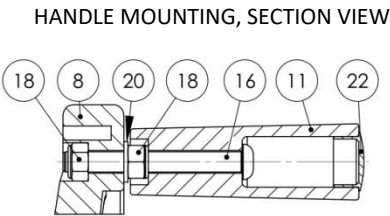
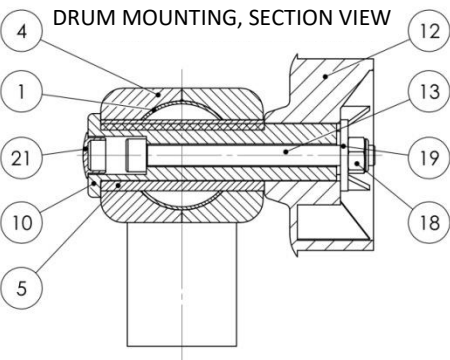
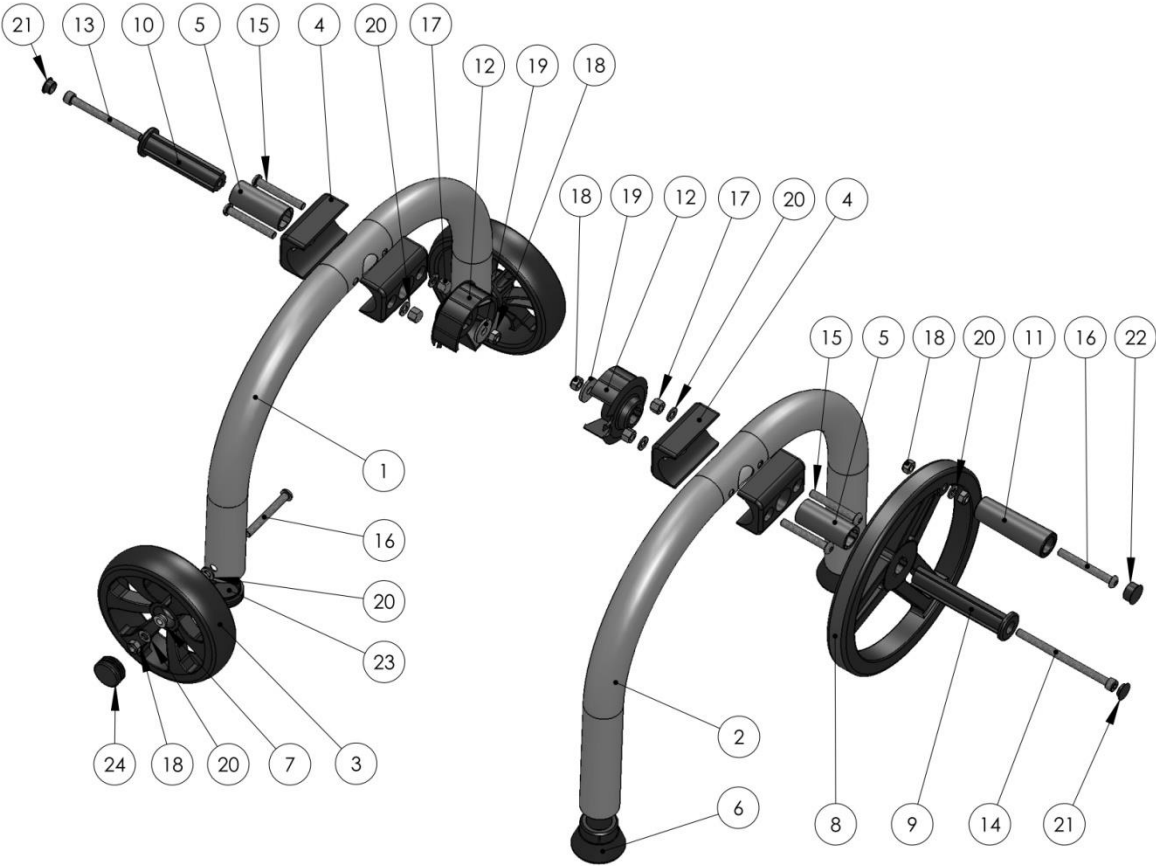
DRUM AND CONTROL WHEEL MOUNTING, SECTION VIEW



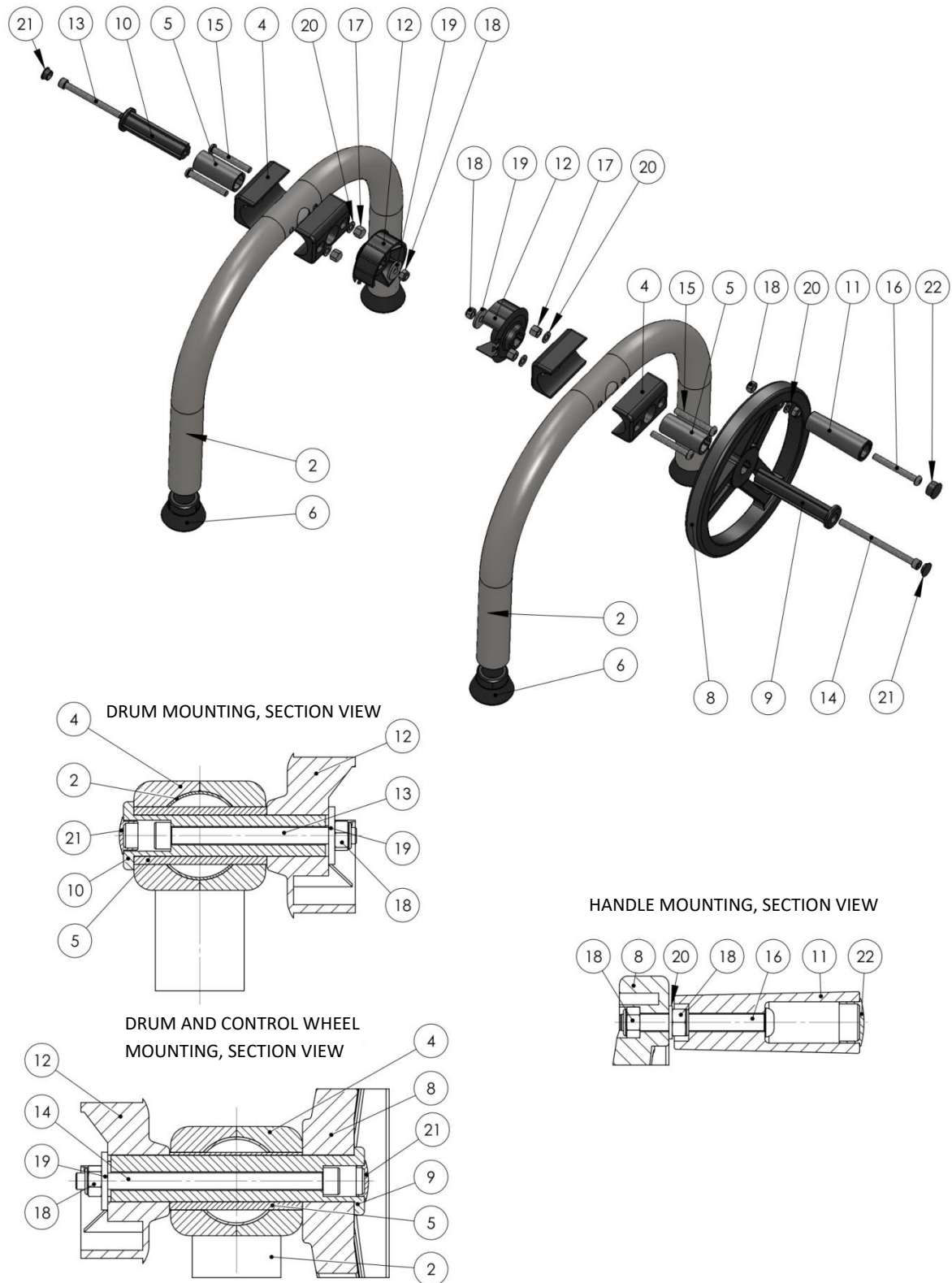
DRUM AND CONTROL WHEEL MOUNTING, SECTION VIEW



MOBILE STAND expanded view



MOVABLE STAND expanded view



Connecting the telescopic pole / Use, maintenance and storage

See the Telescopic rod installation instructions.